

Legal Landmines: What to Know When Starting Your Startup

NOVEMBER 17, 2012

Starting a new company is hard, but putting in place the right legal framework for your business doesn't have to be. WilmerHale Associate Stephanie Singer co-presented to entrepreneurs at the Brown University Venture Labs. During the session, the presenters shared tips to avoid the most common costly mistakes when starting a company. Topics included: founder equity, employee compensation and hiring, capital raising tips, legal entities and intellectual property strategies.

[READ MORE ABOUT THE EVENT](#)

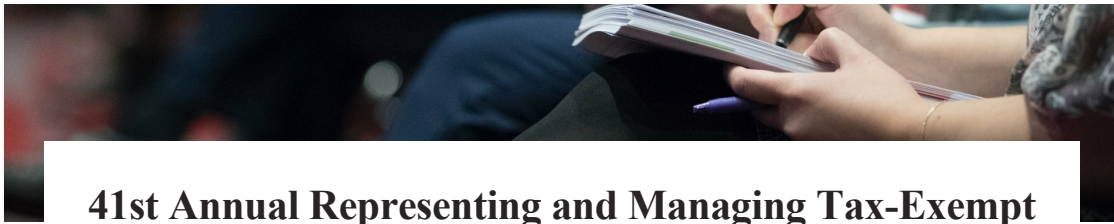
Related Solutions

Intellectual Property
Counseling and Prosecution

Emerging Company and
Venture Capital

You May Be Interested In

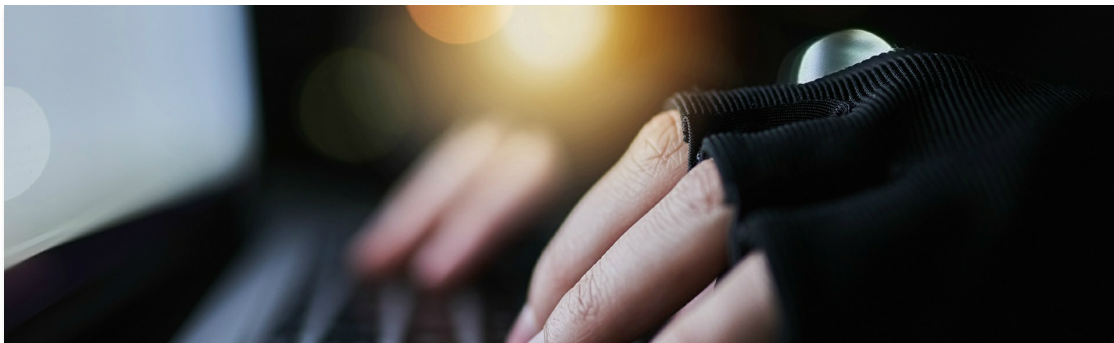




41st Annual Representing and Managing Tax-Exempt Organizations Conference

APRIL 18–19, 2024

SPEAKING ENGAGEMENT



Cybersecurity and Privacy Protection Conference 2024

APRIL 18–19, 2024

SPEAKING ENGAGEMENT



Managing Cyber Risks in 2024: Regulatory Compliance, Litigation Risk, Third-Party Cybersecurity Incident Exposure

APRIL 24, 2024

SPEAKING ENGAGEMENT

[VIEW ALL EVENTS](#)