

WEST: Women in Venture Panel Discussion

JULY 16, 2019
THE ENGINE

Venture Capital is a critical component of the life science ecosystem. Yet, the challenge of accessing VC investment or building a career in venture for women remains a common topic in the industry. Boston is fortunate to have a growing number of women in venture across all stages of investments, investment areas and seniority. Please join Women in the Enterprise of Science and Technology (WEST) for a panel discussion with leading women investors as they discuss their own career paths and what it's like to be an investor in the life sciences.

WilmerHale Partner Cynthia Mazareas will moderate this panel featuring representatives from Novartis Venture Fund, The Engine, Novo Ventures, Equality Asset Management and Echo Health Ventures.

[READ MORE ABOUT THE EVENT](#)

Speakers



Cynthia T. Mazareas

PARTNER

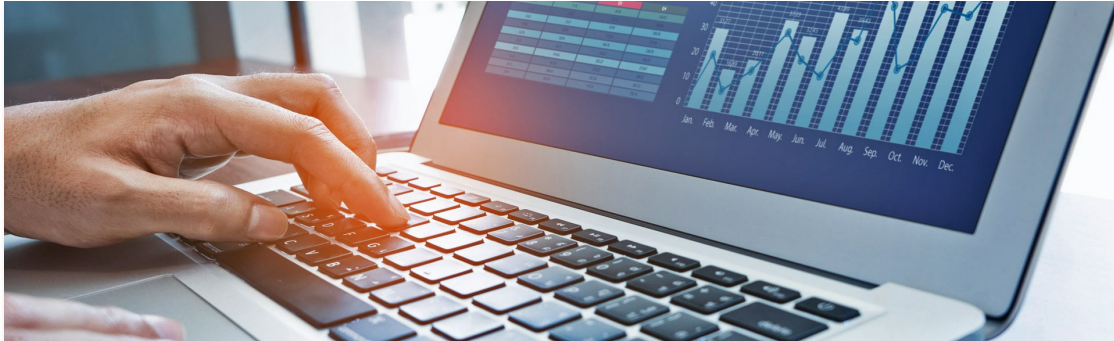
[✉ cynthia.mazareas@wilmerhale.com](mailto:cynthia.mazareas@wilmerhale.com)

[📍 BOSTON](#)

[📞 + 1 617 526 6393](tel:+16175266393)

Related Solutions

You May Be Interested In



The 7th Annual Black Blockchain Summit

SEPTEMBER 21, 2024

SPEAKING ENGAGEMENT



SIFMA C & L Regional Seminar: Charlotte

SEPTEMBER 23, 2024

SPEAKING ENGAGEMENT





The European Union’s Artificial Intelligence Act: What Do You Need to Know if You Want to Use AI?

SEPTEMBER 24, 2024

WEBINAR

[VIEW ALL EVENTS](#)