

WilmerHale Financial Institutions Webinar: View from Washington—What to Expect in Enforcement

FEBRUARY 22, 2017

Join WilmerHale for the first session of the 2017 Financial Institutions Webinar Series, during which attorneys will explore recent developments and legal issues affecting financial institutions and providers of financial services. As the new administration gets underway, the industry is entering a new era of financial rulemaking and regulatory enforcement, of which the short- and long-term implications are unknown.

During the webinar, WilmerHale Partners Reg Brown, Franca Harris Gutierrez, Daniel Kearney and Matthew Martens and Senior Public Policy Advisor Rob Lehman will discuss the post-crisis regulatory era under President Trump. They will address the myriad of potential enforcement changes that lie ahead for reforming the CFPB and other agencies.

Topics of discussion will include:

- federal agency appointments, including the SEC, OCC, CFTC and FDIC;
- enforcement trends and priorities; and
- federal rulemaking priorities.

Participants will have the opportunity to contribute questions online and interact with panelists throughout the webinar.

[View the Webinar Recording](#)

[View the Presentation Materials](#)

[READ MORE ABOUT THE EVENT](#)

Speakers



Franca Harris Gutierrez

PARTNER

✉ franca.gutierrez@wilmerhale.com

📍 WASHINGTON DC

☎ + 1 202 663 6557



Matthew T. Martens

PARTNER

✉ matthew.martens@wilmerhale.com

📍 WASHINGTON DC

☎ + 1 202 663 6921



Rob Lehman

SENIOR PUBLIC POLICY ADVISOR

✉ rob.lehman@wilmerhale.com

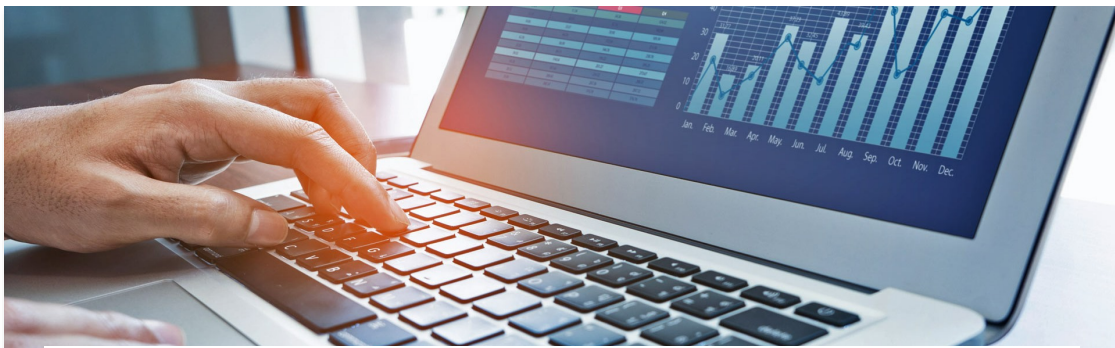
📍 WASHINGTON DC

☎ + 1 202 663 6907

Related Solutions

Public Policy and Legislative
Affairs

You May Be Interested In



The 7th Annual Black Blockchain Summit

SEPTEMBER 21, 2024

SPEAKING ENGAGEMENT



SIFMA C & L Regional Seminar: Charlotte

SEPTEMBER 23, 2024

SPEAKING ENGAGEMENT



The European Union's Artificial Intelligence Act: What Do You Need to Know if You Want to Use AI?

SEPTEMBER 24, 2024

WEBINAR

[VIEW ALL EVENTS](#)